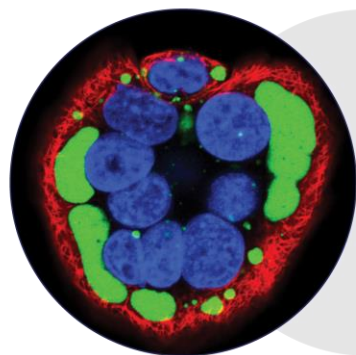


Global Development Workshops, Islamabad March 2020



Prof. Nicola Lowe– Challenge leader
GCRF Food Systems Portfolio

Global Context: UN Sustainable Development Goals



- ❑ Strengthening global peace, security and governance
- ❑ Strengthening resilience and response to crises
- ❑ Promoting global prosperity
- ❑ Tackling extreme poverty and helping the world's most vulnerable



Background to GCRF- £1.5Billion



- 5-year programme, launched in 2016
- Generate excellent and novel research
- Translate research into measurable development impacts
- A sustainable programme with a legacy beyond the initial investment



Cyngor Cyllido Addysg
Uwch Cymru
Higher Education Funding
Council for Wales

hefcw

THE
ROYAL
SOCIETY



EPSRC

Engineering and Physical Sciences
Research Council



GCRF Delivery Partners



THE
ROYAL
SOC



eland

UK Research
and Innovation

Cyngor Cyllido Addysg
Uwch Cymru
Higher Education Funding
Council for Wales

hefcw



**1,750
projects**

**130
countries**

**2,600
organisations**

**7,800
researchers**

<https://www.ukri.org/research/global-challenges-research-fund/funded-projects/>
Also linked through to project information on Gateway to Research.

Key Principles



Key Principles for GCRF funded projects

- Is the research Official Development Assistance?
- Is the research challenge led?
- Does the research have real, measurable impact in the LMIC partner country?
- Are the partnerships equitable?
- Is the research truly interdisciplinary?

Is the research challenge lead?

Discipline-led

I'm a carpenter; pay me to make these different things



Challenge-led

Pay me to build a bridge. I'll work with a carpenter, designer, engineer, river expert...



Are the partnerships equitable?

Equitable partnerships to:

- Identify research gaps and needs (may include community partners)
- Co-create research questions and research outcomes
- Publication strategy to reflect equity
- Build research capacity in the UK and Partner countries to do research for development



Is the research truly interdisciplinary?

Multi-Inter-Trans

- Multidisciplinary partnerships are a fruit bowl, different disciplines brought together, but the apples, pears and peaches lie next to each other without contact and shared flavours.
- Interdisciplinary partnerships are a fruit salad, disciplines, or fruit, are combined to achieve pleasant flavours, i.e. shared outputs.
- A genuine break-down of silos achieves transformed disciplines, a smoothie, where new flavours are created in a highly sought-after product. Transdisciplinary research has been defined as “research efforts conducted by investigators from different disciplines working jointly to create new conceptual, theoretical, methodological, and translational innovations that integrate and move beyond discipline-specific approaches to address a common problem”.



Islamabad Workshops 2020

- Hear about the challenges from the Pakistani perspective
- Bring researchers, NGO's, industry, academics, stakeholders together to find solutions
- Form equitable partnerships for impactful research
- NOT directly seeking to fund new projects developed here



2016-2021

- New calls will be released in 2020 in all discipline areas- website for announcements

2021-2026????

- Making a strong case for GCRF2, outcome not known until after Government spending review, autumn 2020. Planning for a positive outcome- meetings such as this will feed into the process

Any Questions?



Enjoy the workshop!